

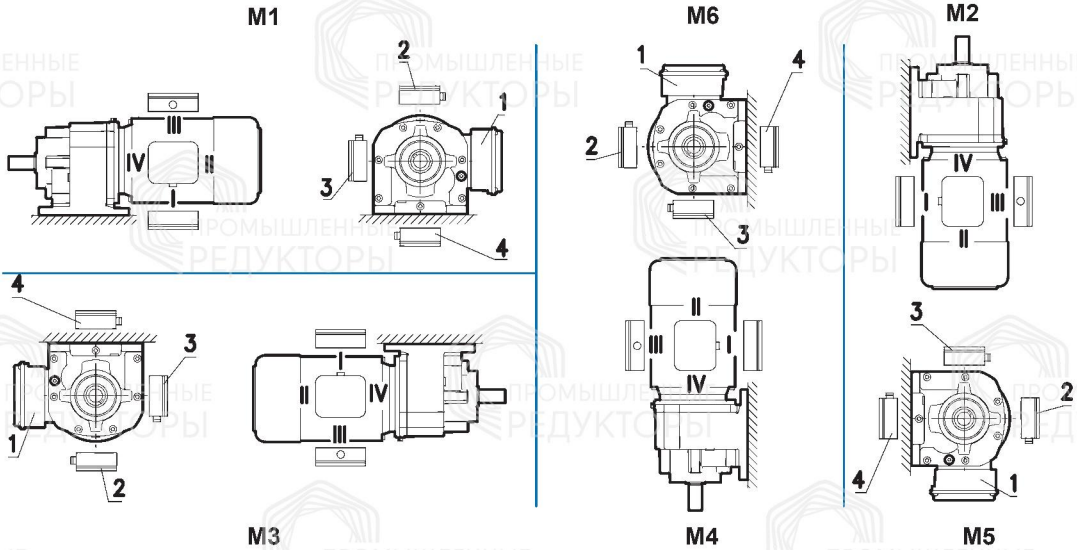
Terminal box and cable gland

Terminal box at 1 and cable gland at I.

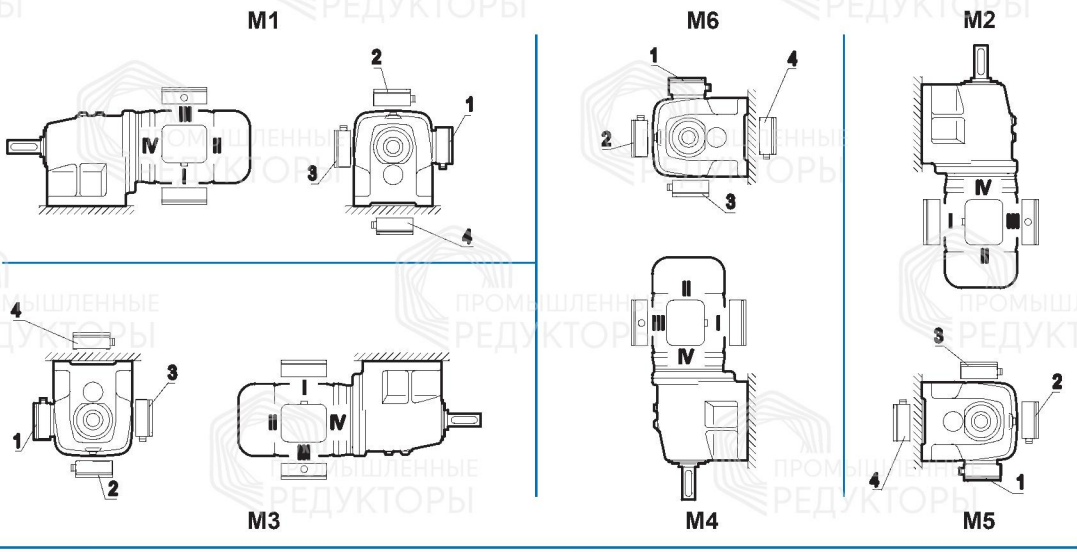
Standardversion

If a different configuration is required, please state this explicitly in the order. Please always enquire about the cable gland for IV.
For size 63 to 132 brake motors, the cable gland at I and III are standard.

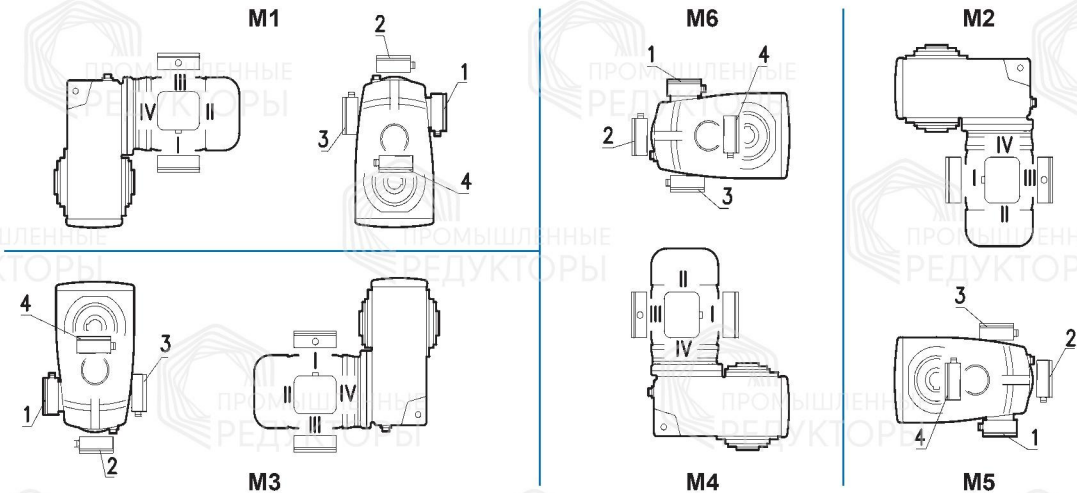
NORDBLOC.1
helical gear units



Helical gear units



Parallel shaft gear
units



For further details of
versions M1-M6
please refer to 
A69

Installation positions - nomenclature

For gear units and geared motors, NORD specifies six installation positions from M1 to M6 as shown in the following diagrams. The relevant installation position must be stated when ordering.

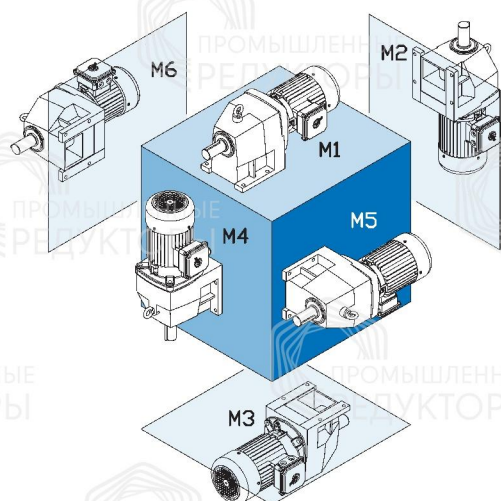
Changes to the installation position require adjustment of the quantity of oil, and often other measures such as the installation of encapsulated roller bearings. Damage may result if the necessary measures are not observed. Tilted installation positions between the 6 basic positions are possible. Please contact us.

**Installation positions
M1 - M6**

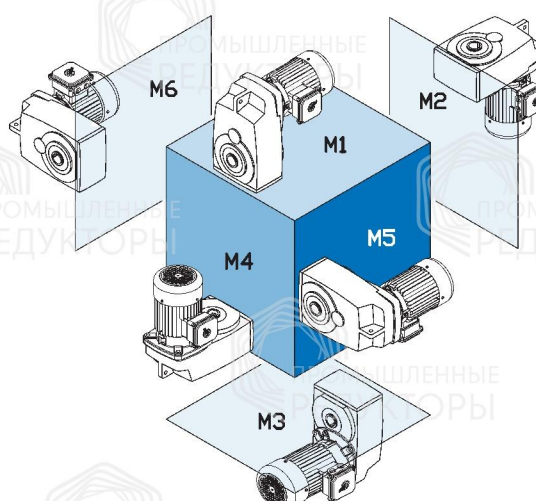
**Changes to
installation positions**

Informations

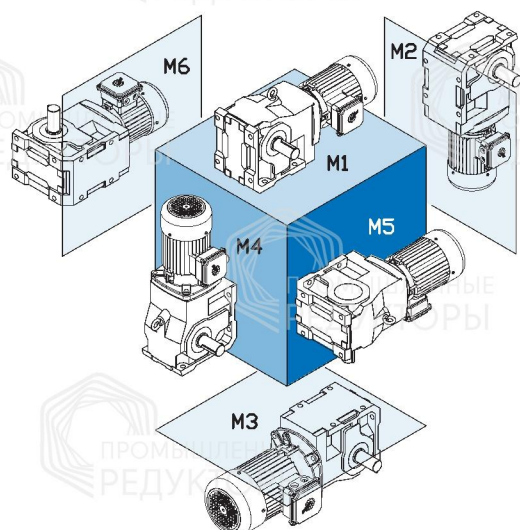
Helical gear units



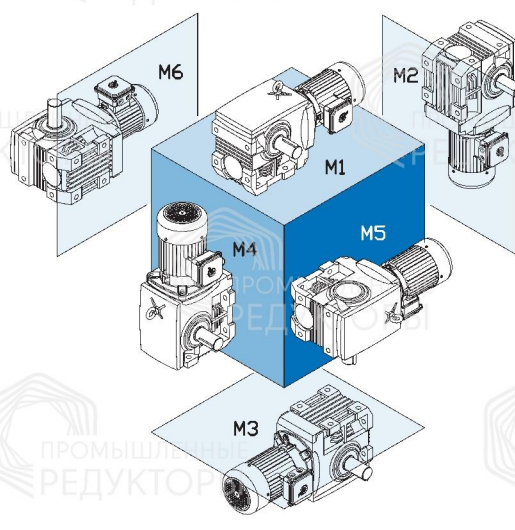
Parallel shaft gear units



Bevel gear unit



Helical worm gear units



The versions, with the position of the oil level plug, the vent plug and the oil drain plug can be found on →  A70